

ULTIMATE TURF TOUCH-UP SOLUTION



Easy Turf Touch-Ups Anywhere, Anytime

The Walk Behind Roller provides quick and effective turf touch-ups for golf courses and sports fields. It's ideal for use during tournaments or between regular maintenance, easily handling tasks like smoothing new sod, cuffs, mounds, baselines, and more.

Available in 24" and 36" models, it features a water-fillable steel drum for adjustable weight, beveled drum ends for smooth transitions, and quiet, oil-free operation. A built-in stand and contamination prevention kit come standard, making it a clean, efficient tool for consistent turf care.

Key Features and Benefits:

Two Size Options - 24" and 36" – Compact for tight areas or wider for faster coverage—flexible for any turf need.

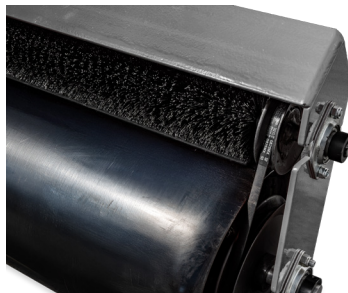
Water-Fillable Steel Roll with Beveled Ends – Adjustable weight with smooth, turf-friendly rolling and reduced edge pressure.

Quiet, Oil-Free Operation – Provides clean, low-maintenance performance—ideal for sensitive areas like golf greens and sports fields.



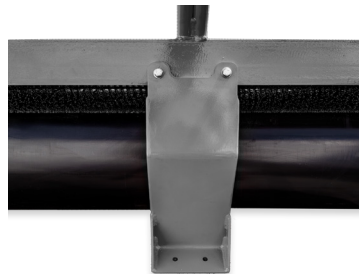
24" and 36" Models

The 24" roller is compact and maneuverable (105 lbs dry, 164 lbs filled), ideal for tight areas. The 36" model offers wider coverage (136 lbs dry, 213 lbs filled) for larger spaces.



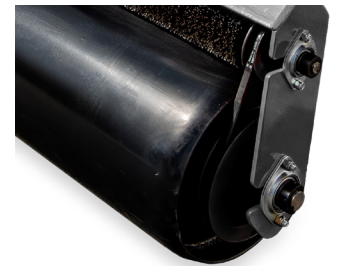
Powered Roll Brush

The Powered Roll Brush helps reduce the spread of turf diseases between greens or fields. It promotes cleaner, more hygienic operation during routine or in-between rolling.



Built-In Stand

The built-in stand provides stable, upright storage for the roller when not in use. It adds convenience by making the roller easy to park and access anytime.



Beveled Steel Roll

The beveled roll prevents turf damage with smooth transitions and low edge pressure. Precision-machined for balance and consistent results.



WALK BEHIND ROLLERS



Product Specifications Model 09113 (24")

Width	24 in (36 cm)
Weight	105 lb (48 Kg) without water 164 lb (72 Kg) with water
Ground Pressure	4.3 PSI without water added to rolls - 6.8 PSI with water added to rolls

Product Specifications Model 09112 (36")

Width	36 in (91 cm)
Weight	136lbs (62kg) without water 213lbs (97 Kg) with water
Ground Pressure	3.8 PSI without water added to rolls - 6.0 PSI with water added to rolls

Standard Equipment

Roll	One (1) 10-3/4 in diameter. Machined to within two thousandths of an inch concentricity. Extra-long beveled edges. Polyester powder coated black paint.
Stand	Standard
Powered Roll Brush	Standard



ID:187989451126